

PICTORIAL ARROWHEAD

OCCUPATION OF JAPAN BY SECOND MARINE DIVISION

WHERE WE WOULD HAVE HIT, D-DAY 1 NOV. 1945

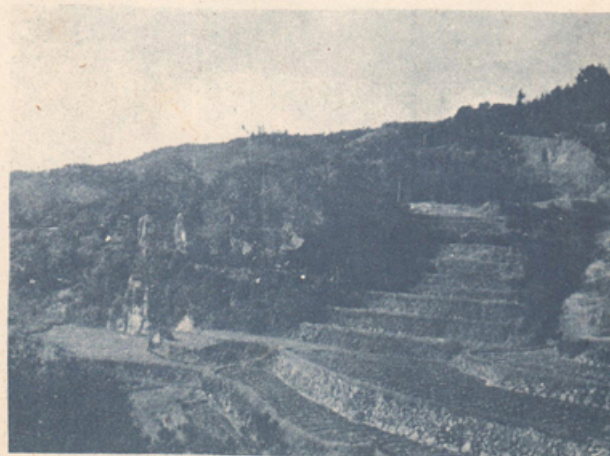


BLUE BEACH

THE SECOND DIVISION BEACH AREA
IN SOUTHWEST KYUSHU ACROSS
THE PENINSULA FROM KAGOSHIMA



JAPANESE FOXHOLE OVERLOOKING
THE INVASION AREA



HERE AS EVERYWHERE ON KYUSHU ARE
RUGGED HILLSIDES OF TERRACED FIELDS

WHERE WE DID HIT, SUNDAY, 23 SEPT. 1945



THE CONVOY PULLS INTO THE TARGET AREA--NAGASAKI



AND CIGARETTES WERE STANDARD INVASION EQUIPMENT



OVER THE SIDE MEN THIS IS IT